

Model

DFF1UHD+ Network Fish Finder

NAVnet

TZ
touchXL

FURUNO

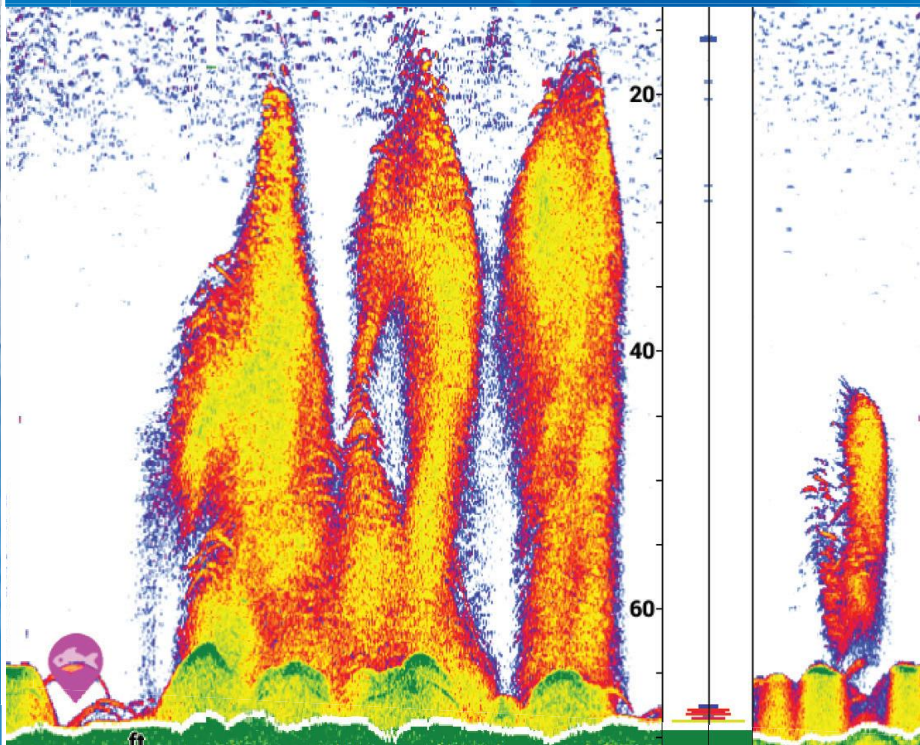
High-Powered CHIRP & Side-Scan Performance in a compact Black Box



The DFF1UHD+ is a next-generation, multi-channel network Fish Finder, purpose-built for NavNet TZtouchXL. Combining TruEcho CHIRP™, CW, and CHIRP Side-Scan in a single, compact unit, the DFF1UHD+ delivers a powerful and flexible Fish Finder solution for serious anglers.

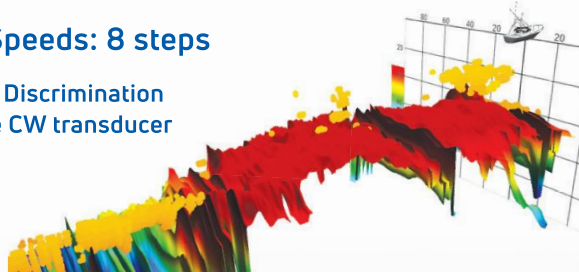
Whether you're bottom fishing in deep water or scanning structure along the coast, the DFF1UHD+ gives you unmatched clarity and target separation with simultaneous dual TX CHIRP and selectable frequencies. Supporting 300/600 W or 1 kW CW/ CHIRP and CHIRP Side-Scan at 230 kHz or 455 kHz, this compact powerhouse sets a new standard for versatility and performance.

FISH FINDER CAPABILITIES

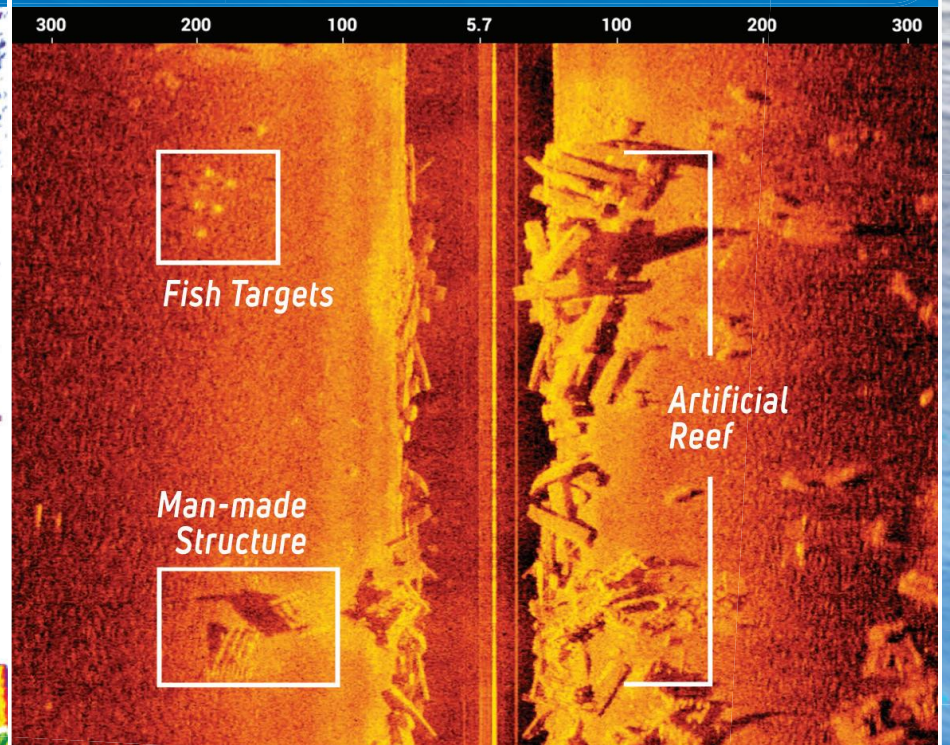


- ▶ 300 W / 600 W / 1 kW TruEcho CHIRP™ or CW performance
- ▶ Display Range: 6 ft to 4,000 ft (Depending on power output and environmental conditions)
- ▶ Modes: ACCU-FISH™*, Bottom Discrimination*, A-Scope, Manual / Auto Gain, TruEcho CHIRP™
- ▶ Fish Finder Alarms: Fish School and Bottom-Lock Fish School
- ▶ Picture Advance Speeds: 8 steps

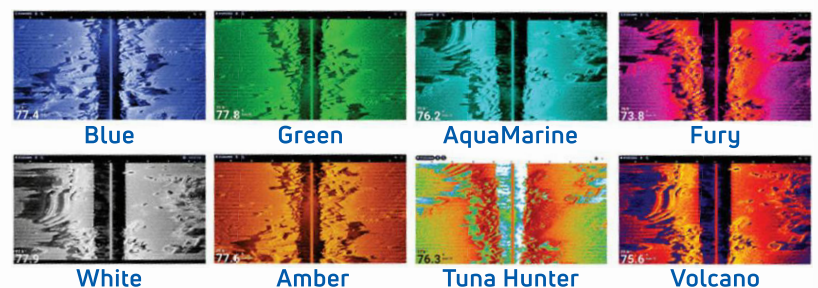
* ACCU-FISH & Bottom Discrimination requires a compatible CW transducer



CHIRP SIDE-SCAN



- ▶ Selectable CHIRP Side-Scan Frequencies: 230 kHz or 455 kHz**
- ▶ Range: Up to 750 ft per side**
- ▶ Screen Layouts: Full, 1/2, 1/3, 1/4, or 1/6 screen (1/6 screen on TZtouchXL only)
- ▶ Eight Display Color Options:



** Transducer dependent

Model

DFF1UHD+

Network Fish Finder

NAVnet

TZ
touchXL

DFF1UHD+

Fish Finder Frequency	CW: 50/200 kHz CHIRP 40-225 kHz
Side-Scan Frequency	230 or 455 kHz
Output Power	300 W / 600 W / 1 kW
ACCU-FISH™	Yes*
Bottom Discrimination	Yes*
Max Depth	4,000 ft (1,200+ m)
Waterproof	IPX6
Operating Temp (°C)	-20 °C to +55 °C
Weight	2 lbs (0.9 kg)
Dimensions	9.5" x 5.8" x 2.3" (241.3 mm x 147.3 mm x 58.4 mm)
Compatibility	TZtouchXL, (TZtouch3 and TZT2BB**)

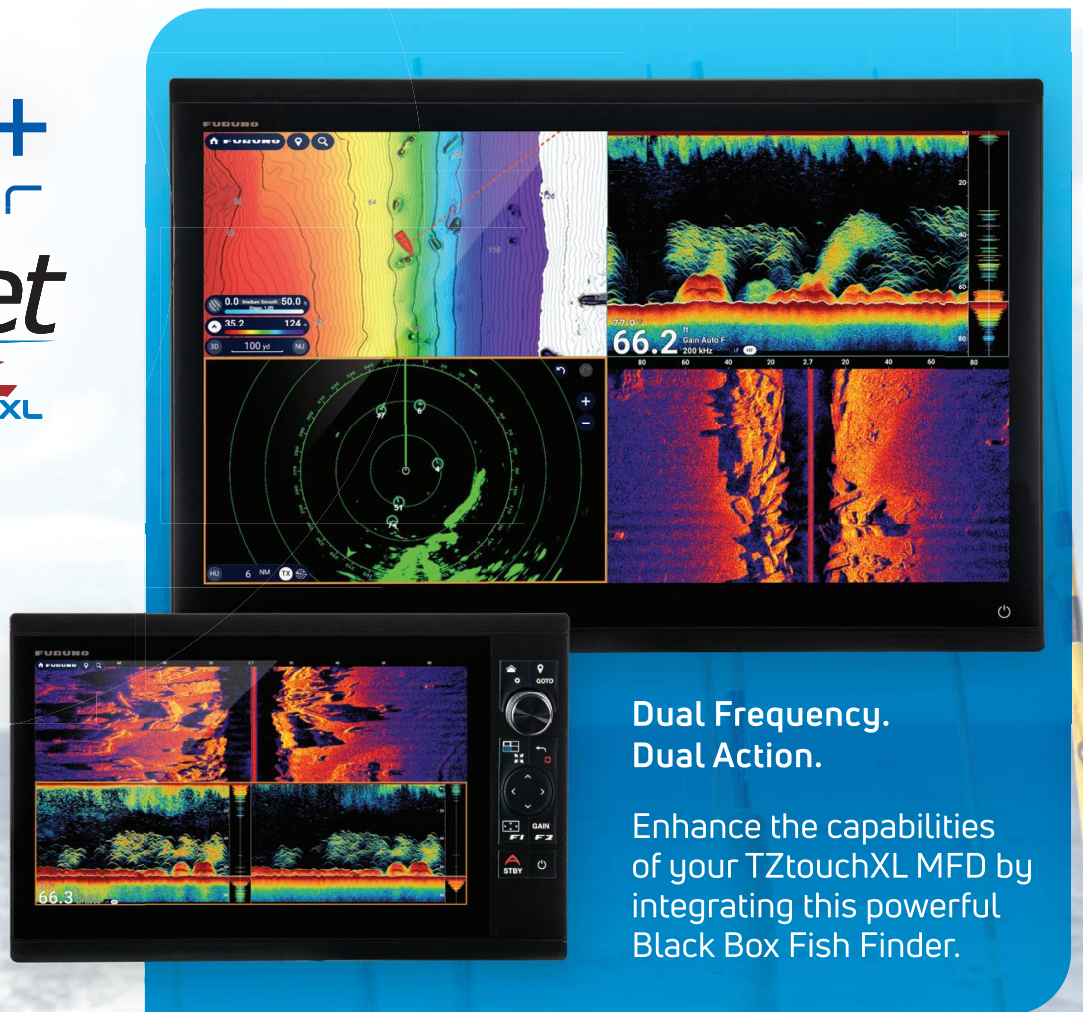
* With Compatible Transducer

** Compatibility pending with future software update

FEATURES & BENEFITS

- ▶ All-in-one Black Box solution for TZT22X, TZT24X, and TZTBBX
- ▶ Simultaneous dual CHIRP TX for stunning detail and depth penetration
- ▶ Dual frequency TruEcho CHIRP™ + Side-Scan operation, even with a single TZT10X, TZT13X, or TZT16X
- ▶ Supports speed and temp sensors
- ▶ Color-coded connectors for simplified installation (Matches TZtouchXL connector color scheme)
- ▶ Heave Compensation with compatible Satellite Compass™
- ▶ Small, compact design with waterproof connections
- ▶ New and improved Auto Gain + three preset frequencies
- ▶ Compatible with NavNet TZtouch3 running the latest software*

* Compatibility pending with future software update



**Dual Frequency.
Dual Action.**

Enhance the capabilities of your TZtouchXL MFD by integrating this powerful Black Box Fish Finder.



2.3"
58.4 mm



5.8"
147.3 mm

12-24 VDC

- Ethernet
- Transceiver Cable
- Transceiver Cable
- Power Cable

Learn More Here



FURUNO